



Recirculating Lab Chiller

Reduce water consumption in cooling process.
Stainless Steel tank.
High performance.

Power (w)	
RLC-05L	330
RLC-10L	450
RLC-20L	750
RLC-35L	1200

Accessories



Flexible tubing with thermal insulation



External immersion probe



Water Still

All material contact water made of stainless steel 304L.
External tank level sensor.
The unit is suitable for both bench and wall mounting.
Conductivity approx 2,5 μ S/cm.

	Power(w)	Litter/Hour
WS-02L	1700	2
WS-04L	3000	4
WS-08L	6000	8
WS-12L	9000	12



Laboratory Hot Plate 50°C~380°C



PID Auto-tuning temperature regulator.
External temperature probe.
Fan cooling for electronic board.
Overflow liquid protection.

Hot plate

Model	Plate (mm)	Power (W)
HP-1816	180 x 160	700
HP-2218	220 x 180	1000

Hot Plates & Stirrers

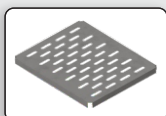
Model	Stirring Capacity (L)	speed (rpm)
HP-1816-1L	1	100-1500
HP-2218-3L	3	100-1500

Laboratory Water Bath 100°C

PID Auto-tuning temperature regulator.
Temperature Stability: $\pm 1.0^{\circ}\text{C}$.
Temperature uniformity: $\pm 0.2^{\circ}\text{C}$ @ 37.0°C .
Stainless Steel bath.

Model	Capacity (L)	Power (W)
WB-11	11	500
WB-17	17	700
WB-34	34	1200

Accessories



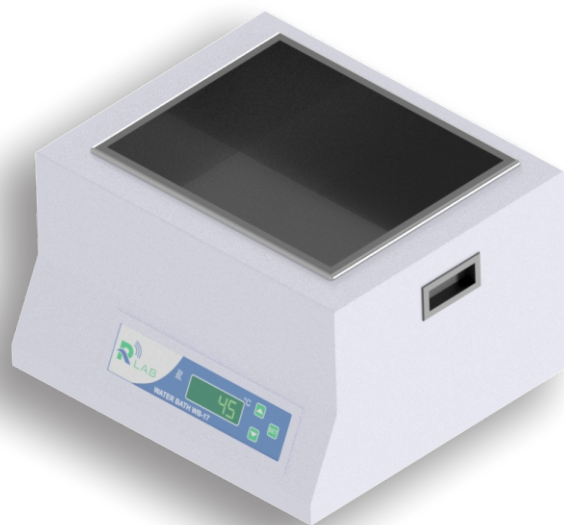
water bath platform



Thermometer Holder



Stainless steel lid



Laboratory OVEN 300°C 35L - 1015L

Forced and Natural convection.
 Electronic Valve air outlet.
 Thermal isolation Rock-wool high density.
 PID Auto-tuning temperature regulator.
 Digital Timer.
 10 programmed preset.
 Volume 35L to 1015L.
 Temperature 50°C - 300°C.

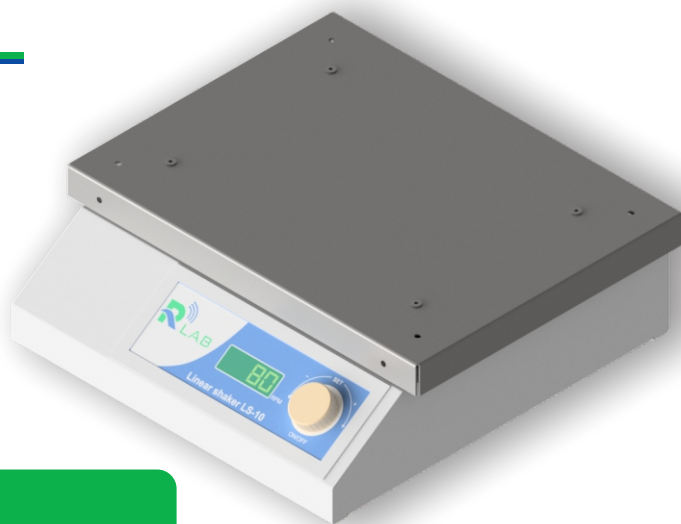


	Chamber Volume (L)	Overall Dimensions (L x W x D mm)	Power (W)	Power Requirement	Weight (Kg)
LO-35	35	650 x 420 x 320	1200	AC 220V	45
LO-60	60	670 x 500 x 400	1400	AC 220V	65
LO-120	120	820 x 600 x 470	2200	AC 220V	87
LO-360	360	1110 x 900 x 570	4500	3Ph AC 220V	170
LO-520	520	1010 x 1400 x 570	1400	3Ph AC 220V	210
LO-820	820	1200 x 1470 x 670	1400	3Ph AC 220V	240
LO-1015	1015	1320 x 1500 x 720	1400	3Ph AC 220V	270

(N)Natural convection (F)forced convection (order will be LO-35-N or LO-35-S).

Laboratory Shaker

Digital speed controller.
Low audible noise.
Stainless Steel platform.
Brushless DC motor.



Orbital shaker : OS-25

Max load capacity(Kg)	3.8
Speed (r/min)	50-250
Orbital diameter (mm)	25
Power (W)	40
Power Requirement	AC 220V
Weight (Kg)	16.5

Linear shaker : LS-10

Max load capacity(Kg)	3
Speed (oscillate/min)	50-250
Linear action (mm)	10
Power (W)	40
Power Requirement	AC 220V
Weight (Kg)	12.5

Rocker shaker : RS-09

Max load capacity(Kg)	5
Speed (oscillate/min)	10-90
Fixed tilt angle (°)	9°
Power (W)	40
Power Requirement	AC 220V
Weight (Kg)	11.4

Accessories



Hole platform



Adhesive rubber mat



Stainless steel lid

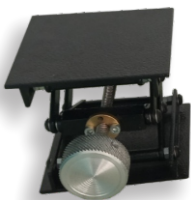


Four bar roller Attachment



Bar roller

Laboratory Jack Lifting



Stainless steel lead screw.
Bronze nut.
High stability and smooth movement.
Long mechanical life.



Model	Platform	Closed/Opened
LJL-10	100x100	45/150
LJL-15	150x150	50/200
LJL-20	200x200	60/350

Dimension:mm

Laboratory Retort Stands



Stainless steel and Mild steel.
Customizable dimension and weight.
Rod range: 200-1000 mm

Model	Platform(mm)	Weight (KG)
RS-S1-M	130 x 210	2.2
RS-S2-M	160 x 250	3.2
RS-S3-M	200 x 310	4.8





Contact

Facebook page : facebook.com/rlabtn

Website : www.rlab.tn

Tunisia office: 

Phone: +216 73 534 458

Mobile: +216 93 413 441

Technical support : tech@rlab.tn

Sales department: sales@rlab.tn

Information service: info@rlab.tn